



Horn fx's Blow! User's Manual

Please read carefully this manual as it provides how to best use this pedal and gives very important informations.

This pedal must be powered with a 9v negative centre power supply.

Warnings

If your Blow ! Version has the optional phantom power module, please do plug your XLRs and Jacks BEFORE powering on the pedal.

Only turn on the phantom power when your channel strip in the mixing table is muted.

To avoid feedbacks, set the gain to zero before removing the PAD.

Don't plug in any electric guitar or piezo pickups in the input combo XLR-Jack. Well you can do it, but the result will be poor, the pedal is not made for these types of mics.

And most importantly : the PAD is set by default. If you push down the PAD button, it'll be removed!!!

What's the Blow! for?

The Blow! is a preamp for static or condenser mics with a jack effect loop for guitar effects pedals. If you're a singer, saxophone player, trombone or trumpet player, etc. the Blow! will allow you to experiment with guitar pedals without loss in your sound quality.

Guitar pickups being more powerful than dynamic or condenser mics, the preamp part allows to attack the guitar pedals with the same level as a guitar's pickup. The XLR in and out and the optional phantom power makes this pedal very similar to a direct box but added a preamp and an effect loop.

Technical specifications

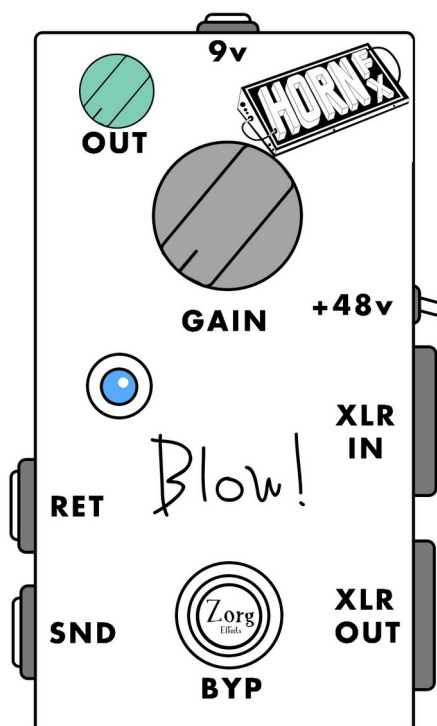
Power consumption : 30mA max without phantom. With phantom: 52mA + 10 x mic consumption.

Preamp gain: +6dB to +50dB

Bandwidth: 20Hz – 20kHz.

Output line level : -20dBu to +4dBu

What are these knobs for?



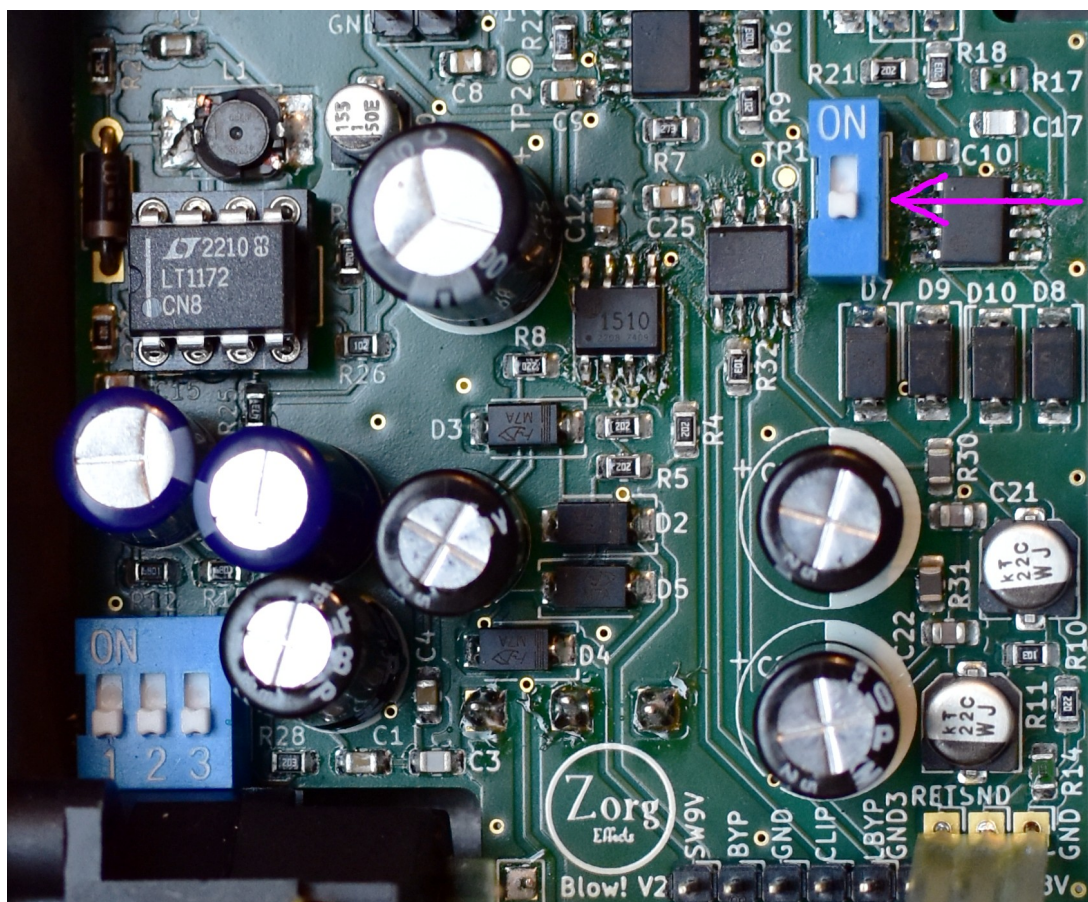
GAIN : This knob allows to set the input gain of the pedal. The gain stage is directly on the pedal's input and is always applied, whether the pedal is in bypass or not. If there's too much gain the pedal can clip and the led will blink green or white. Never set the gain to the maximum. To set a correct gain, first be sure to mute your strip on the mixing table. Then play your instrument the louder you can and push the gain up until the led begins to blink briefly green or white. Then lower the gain a tiny bit until the led don't blink any more when you're playing very loud.

OUT: This knobs lets you dial the output volume of the pedal to adapt to whatever device you plug it in. Note that this volume it placed after the return jack. This affects only the signal going into the XLR OUT.

Bypass/mute : This footswitch allows to bypass or not the effect loop. If the effect loop is on, the led becomes blue.

On the Horn Fx version, the footswitch can also be configured as a mute. In this configuration, when the effect loop is disengaged the XLR output of the pedal will be turned off.

You can change the function of the footswitch by opening the pedal pedal. Find the single small blue switch (purple arrow on the picture below) and turn it off to set the footswitch to the mute function:



+48V : Power on or off the phantom supply for condenser mics. The led becomes red when it's powered on.

How to plug the Blow ?

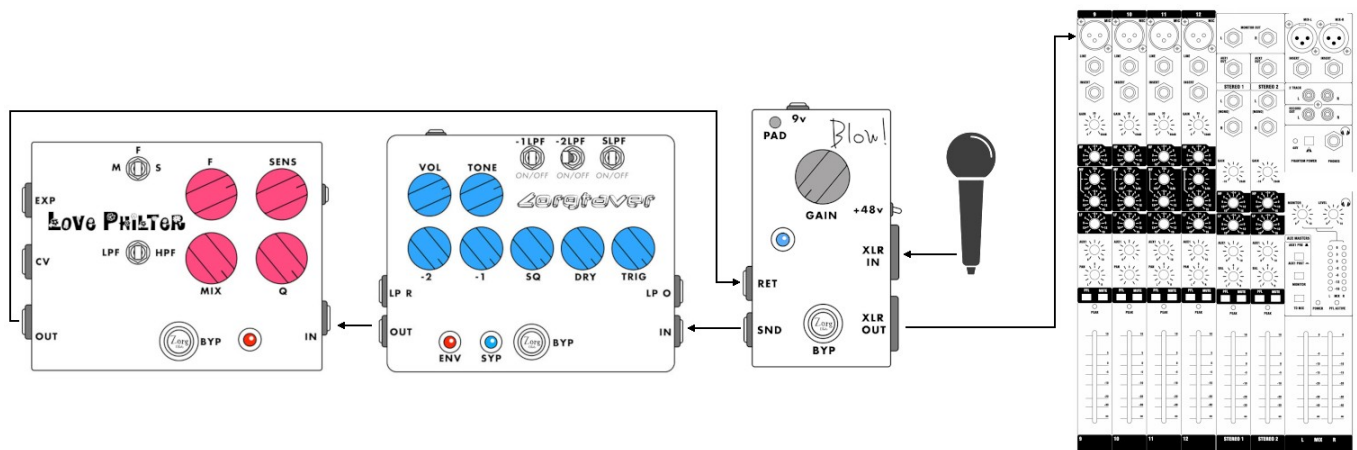
XLR IN : Plug your mic here.

XLR OUT : That's the output to your mixing table or sound card.

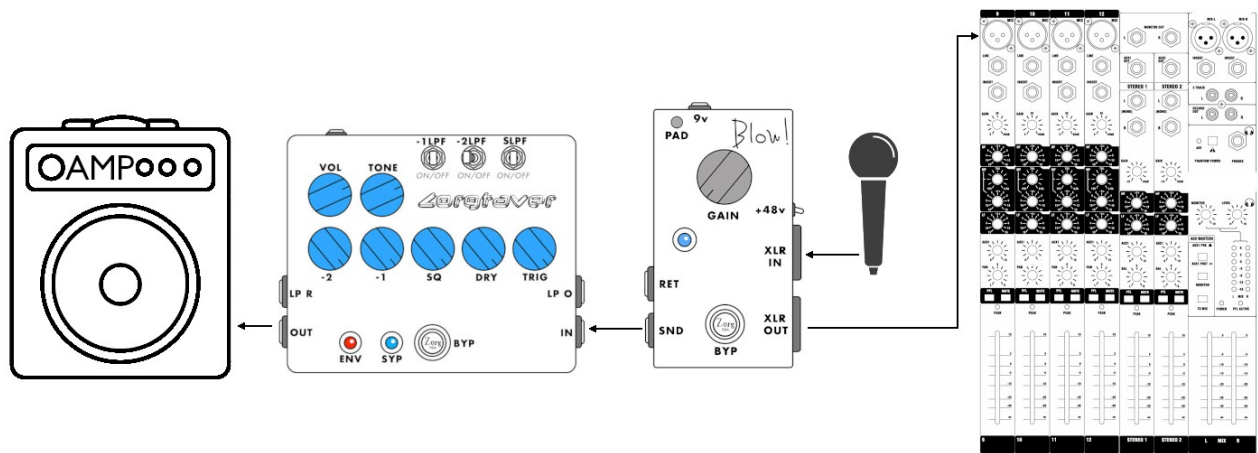
SND : Wire here a jack plug going to your first guitar effect pedal.

RET : Wire here a jack plug arriving from the output of your last guitar pedal.

Classic use case :



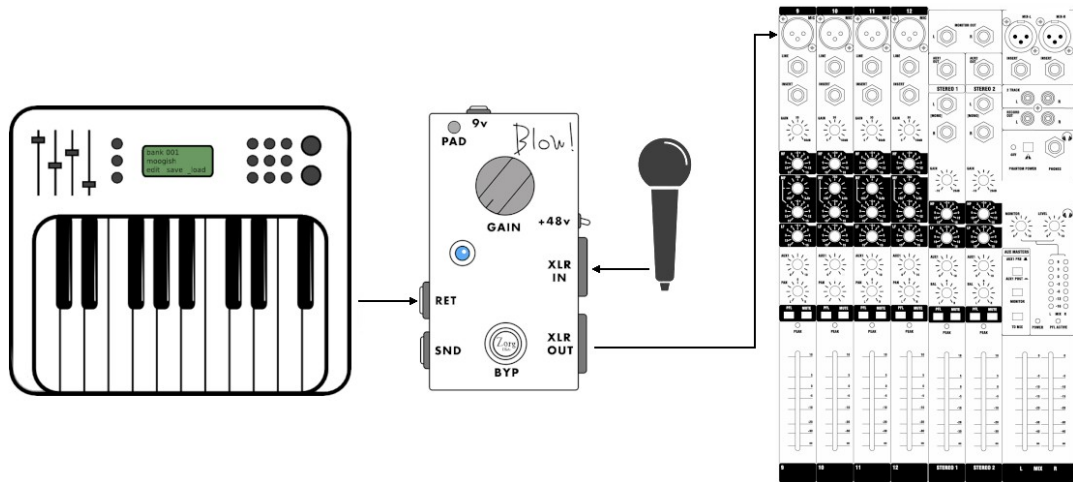
Alternate use case :



Notes :

- Plugging the XLR out to a mixing table is optional.
- In this configuration the signal sent to the mixing table is running only through the preamp and the pad. No effects will ever be applied. The bypass switch will mute/unmute the amp and effects.

Use as a Di :



Notes :

- The PAD button will apply to the output of the Blow!.
- Don't plug a guitar in RET, the Blow! impedance is wrong for it.

Led's colours

The led can makes many colours. If you have the bypass options and it's off, it does not means that the pedals is off, but that the phantom power is off and the effect loop is bypassed: the signal goes directly to the output after the input's preamp without going in the effect loop.

Blue : shines when the effect loop is on.

Green : will blink if the preamp clips when phantom is powered off and Fx loop is bypassed.

Light blue : Case Blue + Green : the pedal sends the signal to the effect loop and is clipping when you play.

Red: The phantom power is turned on, Fx loop is bypassed.

Magenta : Case Red + Blue : the phantom power is turned on and the pedal sends signal into the effect loop.

White: Case Blue + Green + Red : Preamp is clipping, phantom power is turned on, Fx loop is engaged.